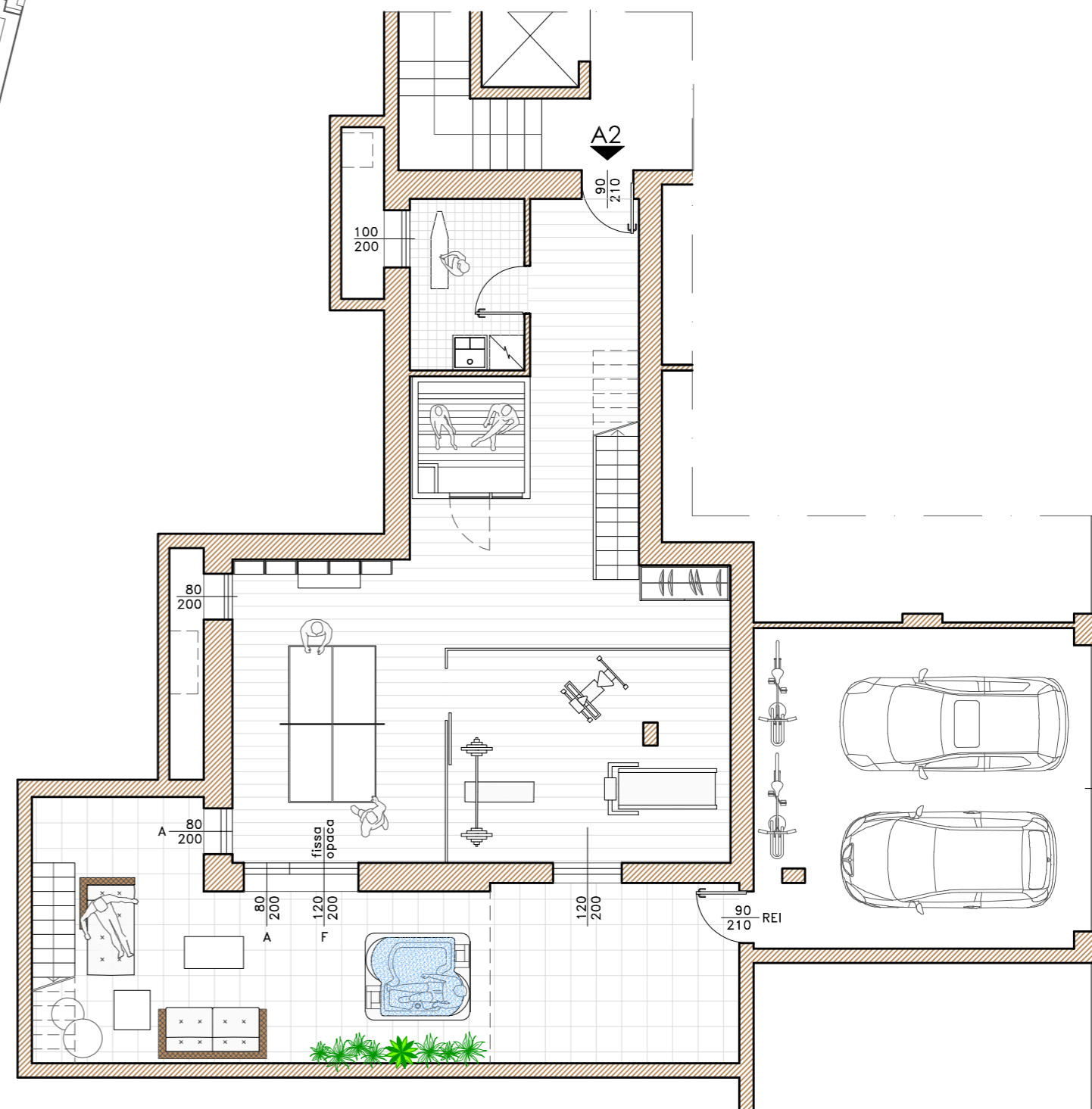
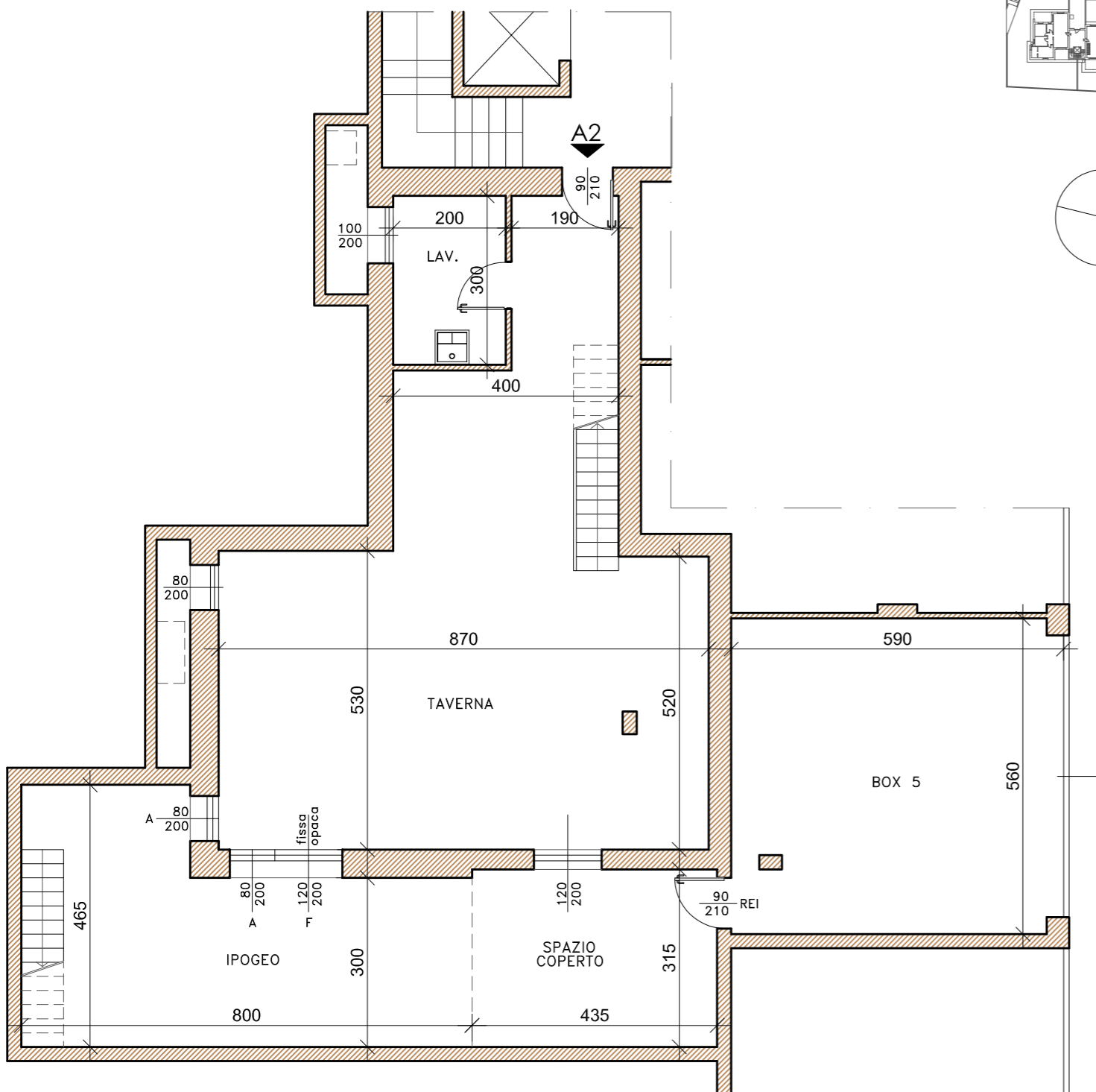
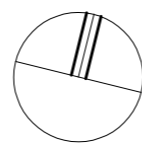
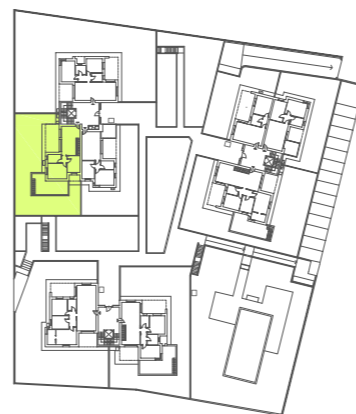


**A2**  
 PIANO TERRA

**SUPERFICIE COMMERCIALE: abitazione mq. 76,04, portico/terrazzo mq. 21,96, giardino mq. 160,00**





**A2**  
PIANO INTERRATO

**SUPERFICIE COMMERCIALE: taverna mq. 91,30, cortile ipogeo mq. 28,65**

